



LOKAYAT SHIKSHAN SANSTHA'S
BAHI KISHANRAO DESHMUKH MAHAVIDYALAYA, CHAKUR
DIST. LATUR [PIN-413513]

PROFILE

Department of Geography

Re- accreditation

2013-2014



PROFILE OF THE DEPARTMENT OF GEOGRAPHY

Introduction

The department of **Geography** has been working since August 13, 1990. This department is one of the biggest departments of Bhai Kishanrao Deshmukh Mahavidyalaya, Chakur. In this college, there are many students who have been learning **Geography** as their optional subject. The department has three faculty members- Asso.Prof.**Dr.R.S.Dhanushwar(Head)**,Asst .Prof. Dr. J. K. Waghmare and Asst. Prof. N. S. Gound.

The Department aims at empowering the students of rural area to lead the society and to understand the Geographical elements and strengthen the atmosphere of the society. In a short span of time, this department has earned a lot of reputation and popularity for providing higher and quality education and fulfilling growing needs of the society. Now this department is one of the favorite among students of our college.

OBJECTIVE

- To study geographical elements along with the study of its specio temporal impact on Human and other factors.

COURSES OFFERED

Sr No	Name of the Course	Duration	Intake capacity
1	B. A. Geography	03 years	120
2	Environmental studies	01 year under UGC Scheme of XI Plan	24
3	Ph D Supervision & Guidance in .Geography	03 years with extension of three more years	08

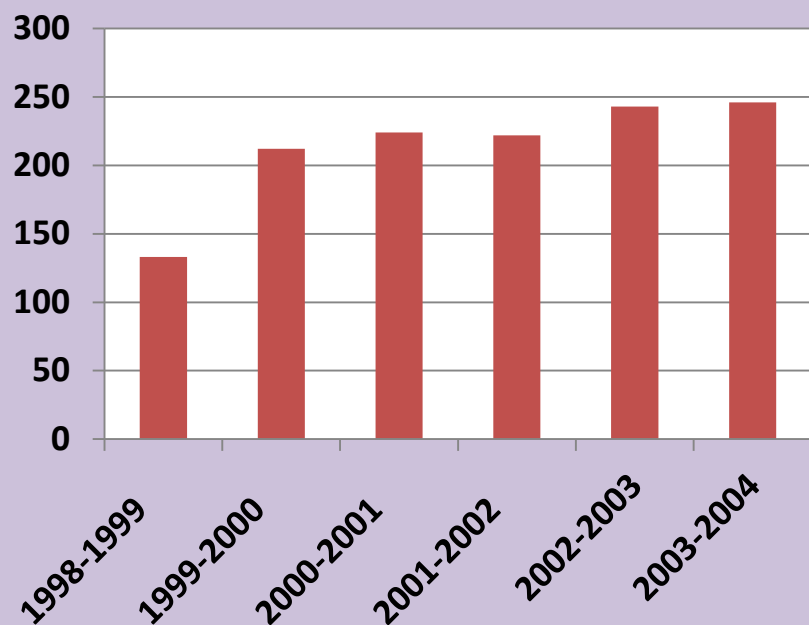
PROFILE OF FACULTY

Sr No	Name of the Faculty Member	Qualification	Designation	Experience
1	Associate Prof.Dr.R.S.Dhanushwar	M.A.B.ed Ph. D. (Geography)	Head, Dept.of.Geography	22 years
2	Asst. Prof. Dr.J.K.Waghmare	M. A. B.ed.M.Phil.Ph.D. (Geography)	Assistant Professor, Dept. of .Geography	21 years
3	Asst. Prof. N. S. Gound	M. A. B.ed. M.Phil (Geography)	Assistant Professor, Dept. of Geography	13 years

STUDENT STRENGTH

NAAC 2003-04

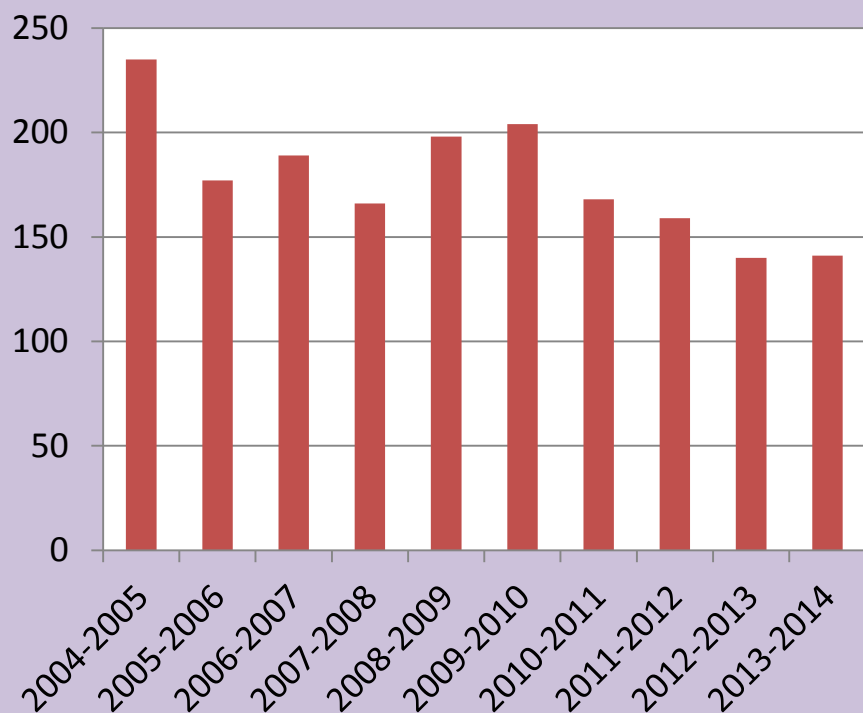
Year	Total
1998-1999	133
1999-2000	212
2000-2001	224
2001-2002	222
2002-2003	243
2003-2004	246



Re-accreditation

2013-2014

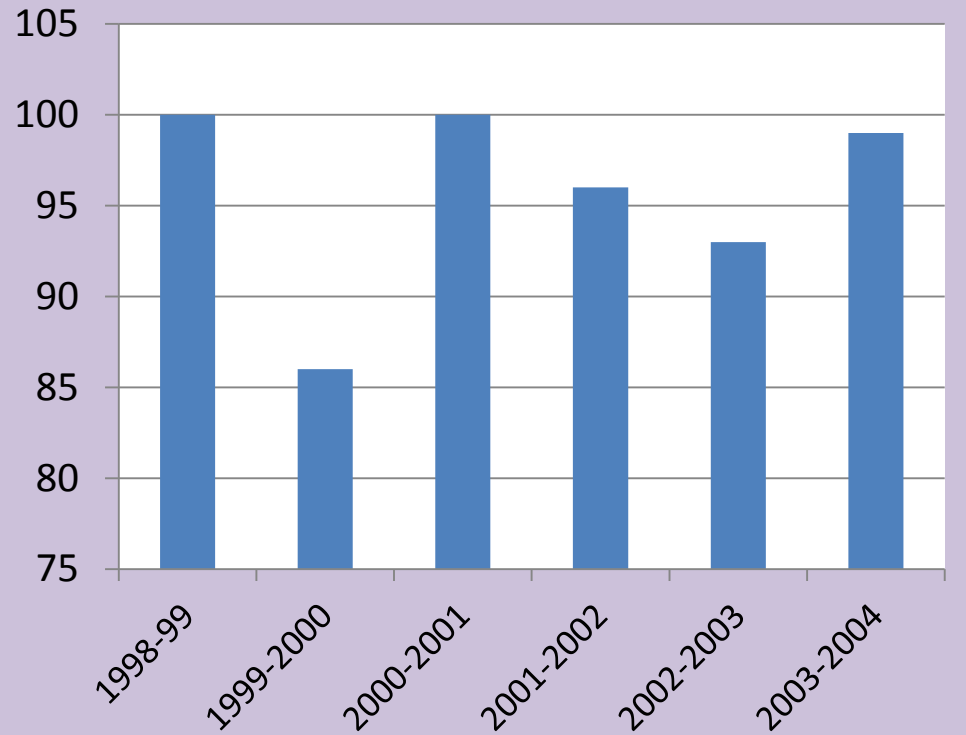
Year	Total
2004-2005	235
2005-2006	177
2006-2007	189
2007-2008	166
2008-2009	198
2009-2010	204
2010-2011	168
2011-2012	159
2012-2013	140
2013-2014	141



RESULTS OF FINAL YEAR EXAMINATION

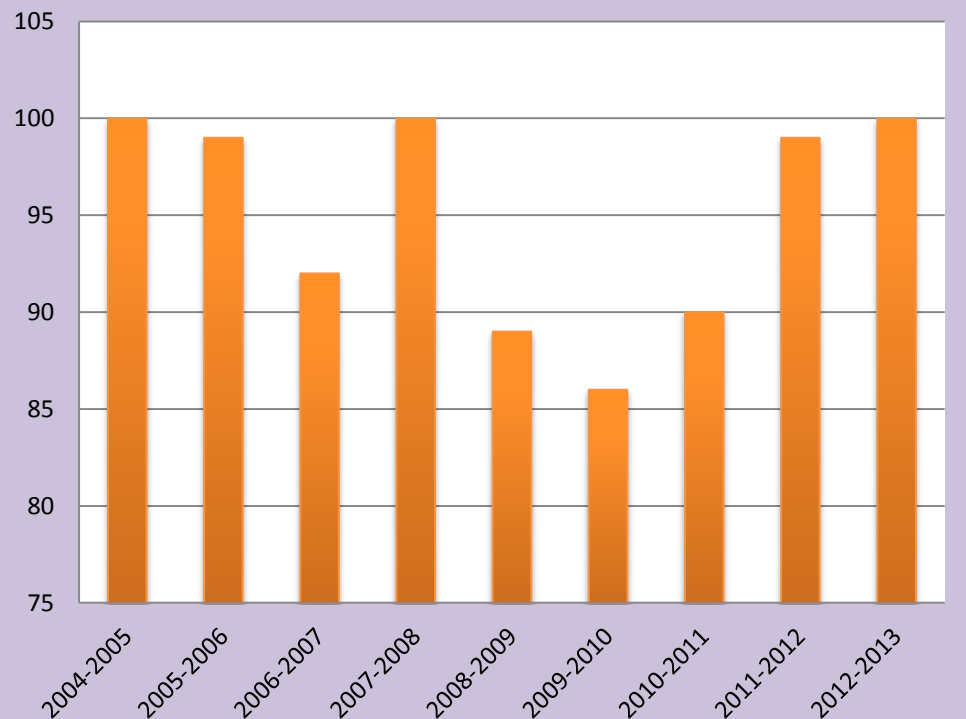
NAAC 2003-04

Year	Average Results %
1998-1999	100
1999-2000	86
2000-2001	100
2001-2002	96
2002-2003	93
2003-2004	99



Re-accreditation 2013-2014

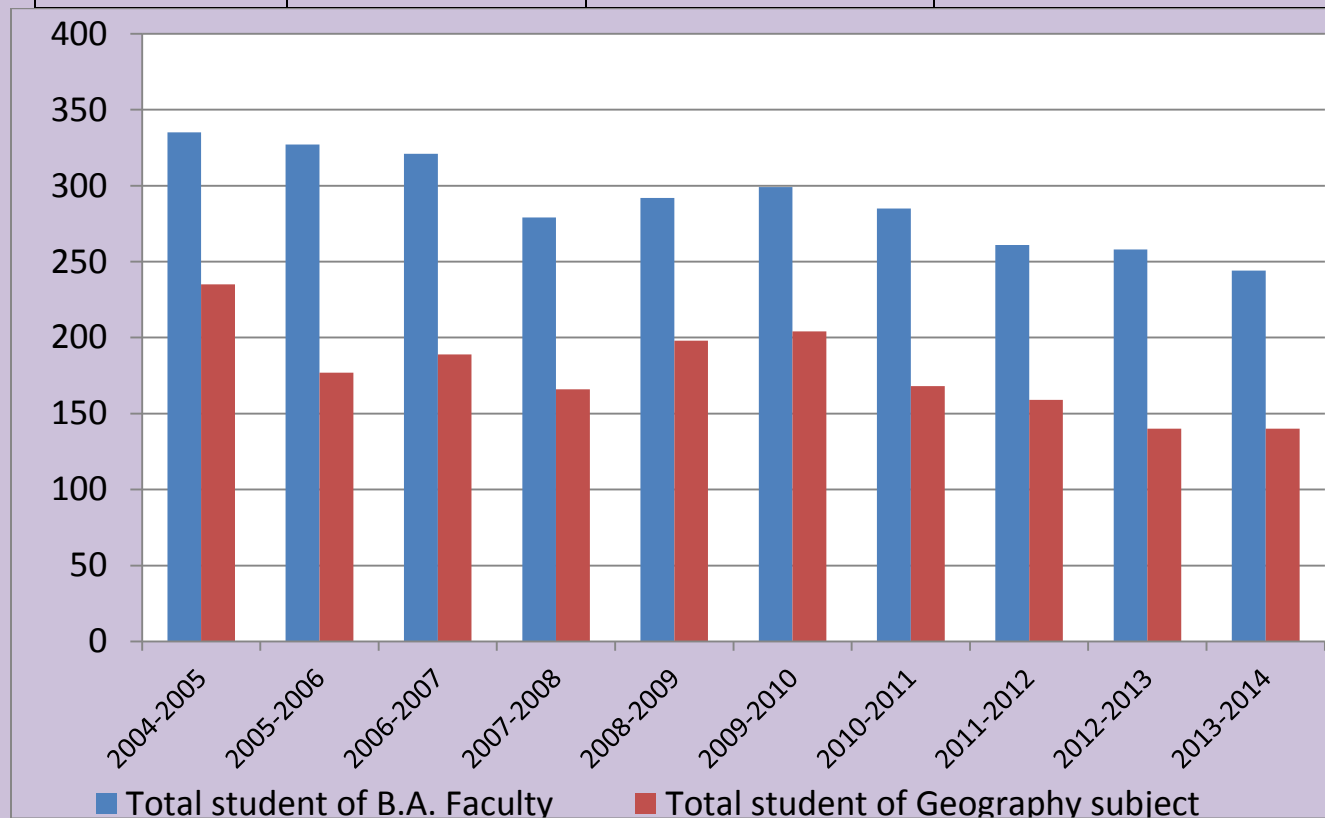
Year	Average Results
2004-2005	100
2005-2006	99
2006-2007	92
2007-2008	100
2008-2009	89
2009-2010	86
2010-2011	90
2011-2012	99
2012-2013	100



Strength of students as compared to other subjects

B.A. FACULTY 2004-05 TO 2013-14

Year	Strength of B.A. Faculty	Strength of Geography department	Strength in percentage
2004-2005	335	235	70.15
2005-2006	327	177	54.13
2006-2007	321	189	58.88
2007-2008	279	166	59.50
2008-2009	292	198	67.81
2009-2010	299	204	68.23
2010-2011	285	168	58.95
2011-2012	261	159	60.92
2012-2013	258	140	54.26
2013-2014	244	40	57.38



RESEARCH PUBLICATION

(i) Books Published as an Author/an Editor with ISSN/ISBN No.

Sr No	Faculty	NAAC 2003-04	Re- accreditation 2013	Total
1	Dr. R .S.Dhanushwar	--	--	--
2	Asst Prof Dr. J.K.Waghmare	--	01	01
3	Asst Prof. N. S. Gound	--	--	--

(ii) Research Papers published in the International, National Reputed Journals & Conference Proceedings:

Sr No	Faculty	NAAC 2003-04	Re-accreditation 2013	Total
1	Dr. R .S.Dhanuswar	--	11	11
2	Asst. Prof Dr. J.K.Waghmare	--	24	24
3	Asst. Prof. N. S. Gound	--	04	04

RESEARCH PROJECTS(UGC sponsored major and minor)

Sr No	Faculty	NAAC 2003-04	Re-accreditation 2013	Total
1	Dr. R .S.Dhanushwar	Nil	MRP-01	01
2	Asst Prof Dr. J.K.Waghmare	Nil	Nil	Nil
3	Asst Prof. N. S. Gound	Nil	Nil	Nil

RESEARCH GUIDANCE

Sr No	Faculty	NAAC 2003-04		Re-accreditation 2013		
		Registered	Awarded	Allotted	Registered	Awarded
		1	Dr. R .S.Dhanushwar	--	--	02-Ph.D
2	Asst Prof Dr.J.K.Waghmare	--	--	--	--	NIL
3	Asst Prof. N. S. Gound	--	--	--	--	NIL

WORKED AS A RESOURCE PERSON

Sr No	Faculty	NAAC 2003-04	Re-accreditation 2013	Total
1	Dr. R .S.Dhanushwar	---	---	---
2	Asst Prof Dr. J.K.Waghmare	---	---	---
3	Asst Prof. N. S. Gound	---	---	---

CONTRIBUTION OF FACULTY TO COLLEGE & UNIVERSITY DEVELOPMENT

1. Dr. R .S.Dhanushwar

College Level	University Level
H O D Dip. of Geography	Member, BOS in Geography SRTMU Nanded
Chairman, Discipline Committee	Member, RRC in Geography SRTMU Nanded
Chairman, Reservation Cell	Chairman, Squad of University Exams
Member of Editor Board	Member of internal Squad of University Examination
Member of library Committee	Worked as JCS

2.Asst Prof Dr. J.K.Waghmare

College Level	University Level
Member, Attendance committee	Member, Paper setting Panel
Member, Cultural Department	Working as Examiner, Moderator
Member, Reservation Cell	Member of internal Squad of University Examination
Member, Remedial Program committee	Examiner, Practical Geography
Member of Editor Board	Worked as CS
NAAC Planning Committee	Worked as JCS
Co-ordinator, COC	Worked as ACS
Member, Time tebal committee	
Chairman, Attends Committee	

3.Asst Prof. N. S. Gound

College Level	University Level
Member, Cultural Dept.	Working as Examiner, Moderator
Member, Exam Dept.	Worked as JCS
Co-ordinator of Y.C.M.O.U. Study center	Worked as CS
Member, Discipline Committee	Worked as ACS
Member, sport Dept	

LIST OF ALUMNI

Sr. No.	Name of Student	Caste	Address
1	GolePadmakarBalaji	S.C.	At. Post Shirnal Tal. ChakurDist.Latur.
2	MotheraoVikasHariba	S.C.	At. Post ChakurTal.ChakurDistLatur.
3	BodewarSuvarnaNagnath	SBC	At. Post ChakurTal.ChakurDistLatur.
4	Swami RavirajPrabhakar	OBC	At. Post ChakurTal.ChakurDistLatur.
5	ShindhikumtheGovindDadaro	Open	At. Post ChakurTal.ChakurDistLatur.
6	ChakurkarPrasannaKrashnarao	Open	At. Post ChakurTal.ChakurDistLatur.
7	Joshi PankajPadmakar	Open	At. Post ChakurTal.ChakurDistLatur.
8	KambleChhayaMaraoti	S.C.	At. Post Bhatsangavi Tal. ChakurDist .Latur.
9	Late SangmeshwarVirbhadra	Open	At. Post ChakurTal.ChakurDistLatur.
10	JangaveSangmeshwarMadhavrao	Open	At. Post ChakurTal.ChakurDistLatur.
11	Mane SantoshBhausahab	Open	At. Post ChakurTal.ChakurDistLatur.
12	MotheraoShrideviSudhakarrao	S.C.	At. Post ChakurTal.ChakurDistLatur.
13	KambleBabasahebVithal	S.C.	At. Post ChakurTal.ChakurDistLatur.
14	KambleMdhukarSopanrao	S.C.	At. Post ChakurTal.ChakurDistLatur.
15	WagalgaveHanmantDadarao	S.C.	At. Post Rachannawadi Tal. ChakurDist .Latur.
16	WaghmareNamdevKeshav	S.C.	At. Post LingdhalTal.Chakur Dist. Latur.
17	ChakurkarGajananUmakant	Open	At. Post ChakurTal.ChakurDistLatur.
18	NilaVinod	Open	At. Post ChakurTal.ChakurDistLatur.

19	ShetePrabhakarNandkumar	Open	At. Post ChakurTal.ChakurDistLatur.
20	Name of Student	Open	At. Post ChakurTal.ChakurDistLatur.
21	JadhavKalpna	Open	At. Post ChakurTal.ChakurDistLatur.
22	DhavaleSeema	Open	At. Post ChakurTal.ChakurDistLatur.
23	TarteSantoshMaroti	NT2	At. Post BolkaTal.KhandarDistNanded.
24	ShaikhTaifar	Open	At. Post Chakur Tal. ChakurDist .Latur.
25	ShaikhAkterrahemanGulabsaheb	Open	At. Post ChakurTal.ChakurDistLatur.
26	PatilRajeshwarAnnarao	Open	At. Post ChakurTal.ChakurDistLatur.
27	Gone SadanandHariba	S.C.	At. Post ChakurTal.ChakurDistLatur.
28	Cheualwar Mahesh	Open	At. Post ChakurTal.ChakurDistLatur.
29	DhudaneChandrshwaniBaburao	Open	At. Post ChakurTal.ChakurDistLatur.
30	PathanMohibKashimkha	Open	At. Post ChakurTal.ChakurDistLatur.
31	HudgeSulkshna	Open	At. Post ChakurTal.ChakurDistLatur.
32	Nakade VasantiRamakant	Open	At. Post ChakurTal.ChakurDistLatur.
33	Wakale Ashok	Open	At. Post ChakurTal.ChakurDistLatur.
34	SutarVitthalManmath	OBC	At. Post ChakurTal.ChakurDistLatur.

SWOC ANALYSIS OF THE DEPARTMENT

Strength

- Faculties with good academic record
- Major students are working in various fields.
- Good strength
- Many students of the college are interested in geography subject
- Geography subject is closely related to all spheres of life.
- Alumni are working in different fields.

Weakness

- Average students from rural draught prone area
- Students from economically and socially weak background

Opportunities

- Job opportunities through competitive exams
- Opportunities in various fields
- Post-graduation in **GEOGRAPHY**

Challenges

- Competition with the colleges from urban area.
- Updating and adopting the recent trends

Future Plans

- To start Postgraduate course in **Geography**
- To organize the International & National Conference
- To develop the geography Laboratory
- To complete Minor& Major Research Project

Faculty Member

Head, Dept. of Geography

Dr. R .S.Dhanuswar

1) Asst. Prof.Dr. J.K.Waghmare

2) Asst Prof. N. S. Gound

DEPARTMENTAL PROGRAM

- BHUGOL DIN 14 JANEWARI
- OZON DIN 16 SEPT
- VAN DIN 22 MARCH
- JAGATIC JAL DIN 24 MARCH
- VASUNDHARA DIN 22 APRIL
- JAL SAMPATTI DIN 29 APRIL







LokmanyTilak& Anna Bhaushathe



Dr. J. K. WAGHMARE Ph. D











